

LOGSTOR TwinPipe

Focus on Total Cost of Ownership and minimizing heat loss and CO₂ emission



LOGSTOR TwinPipe system

TwinPipe is a complete transmission and distribution system for district heating. Using TwinPipe for district heating pipelines rather than single pipe systems can lead to significant savings in terms of heat loss and CO₂ emissions, as well as investment and operating costs. With a diffusion barrier, TwinPipe offers even more savings during service lifetime.

We produce TwinPipe using two methods:

Conventional production method

- Straight TwinPipe
- Diameter of carrier pipe: 26.9 - 219.1 mm
- Steel carrier pipe
- Insulation series 1,2 and 3
- Lambda value: 0.027 W/mK

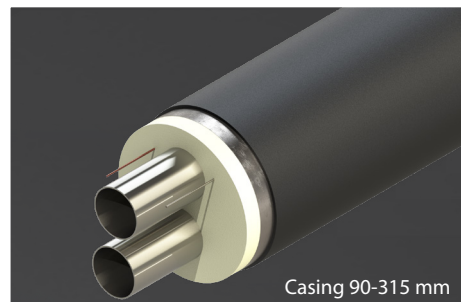
Axial continuous production method

- Straight TwinPipe
- Diameter of carrier pipe: 26.9 - 114.3 mm
- Steel carrier pipe
- Insulation series 1,2 and 3
- With a diffusion barrier which ensures that the insulation property is kept constant over life time
- Lambda value, casing 90-315 mm: 0.023 W/mK

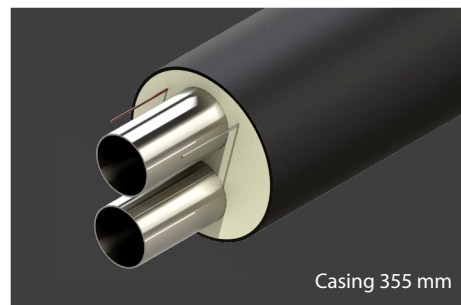
Advantages

- Lowest possible heat loss leading to lower CO₂ emission *
- ROI increases and shortens payback time as world energy prices rise *
- Lowest possible environmental impact *
- Significant savings on operating costs *
- Easier planning and installation
- Lower Cost for excavation and installation *
- Lowest Total Cost of Ownership *
- Fewer components and joints needed
- All fittings and joints included as an integral part of the system

* Based on calculations of possible choice of pipe systems in LOGSTOR Calculator and LOGSTOR TCO Tool.



Casing 90-315 mm



Casing 355 mm

LOGSTOR Denmark Holding ApS
Danmarksvej 11 | DK-9670 Løgstør

T: +45 99 66 10 00
E: logstor@kingspan.com



For the product offering in other markets please contact your local sales representative or visit www.logstor.com

Care has been taken to ensure that the contents of this publication are accurate, but Kingspan Limited and its subsidiary companies do not accept responsibility for errors or for information that is found to be misleading. Suggestions for, or description of, the end use or application of products or methods of working are for information only and Kingspan Limited and its subsidiaries accept no liability in respect thereof.

To ensure you are viewing the most recent and accurate product information, please scan the QR code directly above.

Second Issue | 07/2023

